

*Kitchen and room planning concepts  
of timeless elegance*

# PURE

**SieMatic**













REDISCOVER

# PURE INSPIRATION

---

A room can be an island: an oasis of peace and ease in which you can shed the hectic demands of everyday life like an overcoat. Generously designed forms, sensitively selected colors, and the avoidance of anything that is all too decorative create an atmosphere of soothing balance.

Elementary simplicity that is understood the same way around the world. Relaxation with an inspirational effect. A place where your own personality can unfold.

Because here the focus is on the person; not the furniture.

DESIGN TO YOUR HEART'S CONTENT

# WELCOME TO THE PURISTIC WORLD OF SIEMATIC

---

Give enjoyment more space in your life. The *SieMatic PURE style collection* opens up a cornucopia of creative options, with room concepts integrating the functions of the kitchen with the architecture, perfectly and unobtrusively. The elegant minimalistic language of form of the furniture elements from the *SieMatic PURE style collection* places the focus on what really counts: the lasting values of the exquisite materials and the precision of their workmanship down to the smallest detail.













THE LEADING LINE OF ELEGANCE

## GRASPING A NEW WORLD

---

In the style collection PURE, omission becomes an art form and simplicity an expression of refinement. The handle-free *SieMatic* SLX PURE follows this maxim, too. Grasping becomes a basic aesthetic principle. At the heart of the new concept lies the re-designed recessed grip combined with the delicate proportions of just 6.5 millimeters. The perfect angle, the pleasing structure of the handle channel, the refined materials bring tactual properties to the forefront – and are precisely what makes this kitchen such an eye-catcher, too.



COMPETENT CONSULTING AND PROFESSIONAL PLANNING

## A VISIT THAT GIVES YOU A NEW PERSPECTIVE



*SieMatic* is at home anywhere. In apartments and lofts, row houses and villas, great metropolises and rural regions, and in 60 nations around the world. Wherever you encounter the name *SieMatic*, you will get a comprehensive picture of what is recognized as timelessly elegant kitchen design and the best combination of master craftsmanship and state-of-the art technology because your *SieMatic* specialist is always up to date on current aspects of interior design and technical innovation. And he or she is also an expert listener, who makes wishes come true and shows you new perspectives.

Your *SieMatic* specialist is looking forward to your visit. The fastest way to get there:  
***[www.siematic.com/showrooms](http://www.siematic.com/showrooms)***





A PARISIAN PORTRAIT

# OPPOSITES THAT ATTRACT



A realm of contrasts is created by the owners of this generous apartment in an older building in the heart of Paris. Their idea: “When black meets white, classic meets modern, and master craftsmanship meets perfect industrial processing, the result is interior design that could not be more exciting.”











A SURPLUS OF POSSIBILITIES

## DISCOVER NEW LATITUDE FOR ALL OF YOUR IDEAS

---

Design with colors, forms, volumes, and materials that until now were predominantly used to create atmosphere in living rooms. Create attractive accents with countertops. Turn walls and niches into eye catchers and do so by selecting from a unique wealth of furniture elements of timeless elegance because you don't buy a *SieMatic* "off the rack." It is designed by your *SieMatic* specialist precisely in accordance with your wishes, equipped and planned to fit your life perfectly. Only then do we build it. Just for you.









UNIQUELY VERSATILE

# THE HARMONIOUS COMBINATION OF EXTERNAL AND INTERNAL VALUE



Minimalist design emphasizes love of detail, the measure of perfection, and the value of select materials. That goes for the surfaces of the cabinet elements as well as their inner life. Behind every door and in every drawer, you will discover a perfect new world with *SieMatic*: material combinations that provide for fascinating harmony of form and color, inside and out.



SieMatic Pure

INSIDE AND OUT, PURE HARMONY

# SIEMATIC ALUMINUM INTERIOR ACCESSORIES

An aesthetic treat that is unique in its functionality and unmistakable in its graphical look. It was created with the innovative new material combination of aluminum, light oak or dark smoked chestnut, flock, and porcelain, as well as precise workmanship down to the smallest detail. Intelligent, contemporary ideas, like the integrated USB connection, offer valuable functions for the kitchen. The highly flexible *SieMatic Interior Design System* makes it possible to arrange and equip the drawers and pullouts in a way that could not be more individual, and it has won a number of awards for its unique design.

*Sophisticated smoked chestnut: The dark chestnut wood is darkened by smoking, not just superficially varnished or painted, in order to achieve a fine patina over the long life of a SieMatic, without light-colored scratches.*





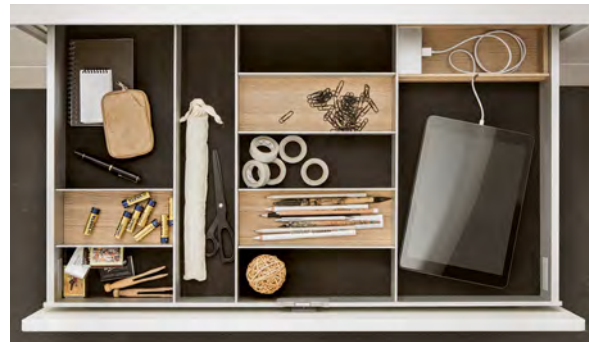


## EVERYONE IS DIFFERENT.



### BETTER SAFE THAN SORRY

*The GripDeck drawer bottom provides elegant protection against scratches and keeps pots from sliding.*



### DRAWERS YOU CAN LOAD UP

*Drawers with an integrated USB charging station keep tablets and smartphones out of the way.*



### UNLIMITED POSSIBILITIES

*With their versatile furnishing elements, drawers offer room for supplies and tall items.*



## SO IS EVERY SIEMATIC.



### WIDE-RANGING SELECTION

*The variability of the system elements creates nearly infinite options for arrangement.*



### A GOOD MIXTURE

*A block for sharp knives of any length, spice mills, and transparent jars.*



### NEAT SOLUTION

*If you want to turn the kitchen into living space, you will want to store more than cooking utensils there.*





THE FINE MEASURE OF ALL THINGS

## PURIST DESIGN HAS ITS OWN PROFILE

---

With delicate frames, metallic materials, sophisticated wood and nuanced lacquer hues, *SieMatic* has developed a unique design language for the kitchen. Whether with or without handles, the focus is on newly developed front panels with narrow 6.5 mm frames. Carefully selected combinations of materials give rise to unique possibilities for purist ambience in kitchen design, from cool and technical to warm and homey. Perfectly harmonized with the front panels are countertops and island side panels with a 6.5 mm appearance. The sensitive play of fine lines characterizes this design concept.



TRADITION AND INNOVATION

# FROM THE CREATORS OF THE HANDLE-FREE KITCHEN



In 1960, *SieMatic* presented the first handle-free kitchen to the world, whose numerous innovations were celebrated as a revolution. Its design became a model for many, has been adapted sensitively to contemporary taste many times, and has won a number of awards. After all, who should continue to develop an idea more ambitiously than its inventor? Thus *SieMatic* turned the first kitchen without handles and knobs into what is now the broadest range of planning options for friends of puristically designed, handle-free kitchens.











HARMONIOUS CONTRAST

## PIONEERING LINES

---

In the new *SieMatic* SLX PURE, light and lines unite in a unique symbiosis. The lighting strips subtly integrated into the shadow gap of the recessed grip are a key design element. They create a special three-dimensional effect on smooth surfaces, enhance the floating impression of the countertop and emphasize the balanced proportions.

With individually controllable color temperature and brightness, the LED light has a direct influence on the atmosphere of the room – and the mood of its users.

The lighting strips can be installed both vertically or horizontally to create eye-catching accents. They reveal their striking effect particularly when combined with dark nuances, like here with the matte lacquer in “*Graphite Gray*”, recessed grips and handle channels in “*Gold Bronze Anodized Aluminum*” and the countertop in “*Ceramic Storm Negro*”.









THE KITCHEN AS REFLECTION  
OF YOUR OWN PERSONALITY

## WHAT YOU LOVE, YOU WANT TO SHOW, NOT HIDE

Design can speak volumes: The design of the things with which we surround ourselves tells of our wishes, dreams, and feelings. This is also true for the many utensils that are needed in the kitchen and have been selected with love. With their tinted glass walls and delicate aluminum frames in *“Gold Bronze Anodized Aluminum”*, *“Matte Black anodized aluminum”* or *“Stainless Steel”*, the luxurious glass cabinets offer the perfect stage for their contents. The elegant *“Herringbone Tarsie”* veneer and the floating pull-outs in *“Oak Hazel Brown”* are skilfully highlighted through cleverly placed lighting elements.



MORE IDEAS PER SQUARE METER

# DO YOU KNOW THE DIFFERENCE BETWEEN A KITCHEN AND A SIEMATIC?



A kitchen is for cooking; a *SieMatic* kitchen makes cooking a pleasure. You can enjoy your whole life here, if you wish. Every day. Because a *SieMatic* offers options that go far beyond the usual kitchen designs and provides for virtually endless creativity in design – regardless of your space or budget.

The purist design language of this compactly planned, handle-free *SieMatic* with its perfectly aligned joints showcase the high-quality materials selected: polished stainless steel combined with satin matte lacquer in “*Graphite Gray*”. Opening the doors with the touch of a finger leaves hardly a trace, even on matte lacquer, thanks to *SieMatic AntiPrint* coating.











**DELICATE FRAMING**

*A picture of calm results from using the same material in the same thickness for both countertop and side panel. Here we see the fine 5 mm framing in stainless steel.*



**PURITY OF ORDER**

*The MultiMatic Interior System can be put together individually, and you can easily add to or change it at any time.*



SOPHISTICATED INTEGRATION

## IT IS NOT THE SIZE THAT COUNTS, BUT THE IDEA

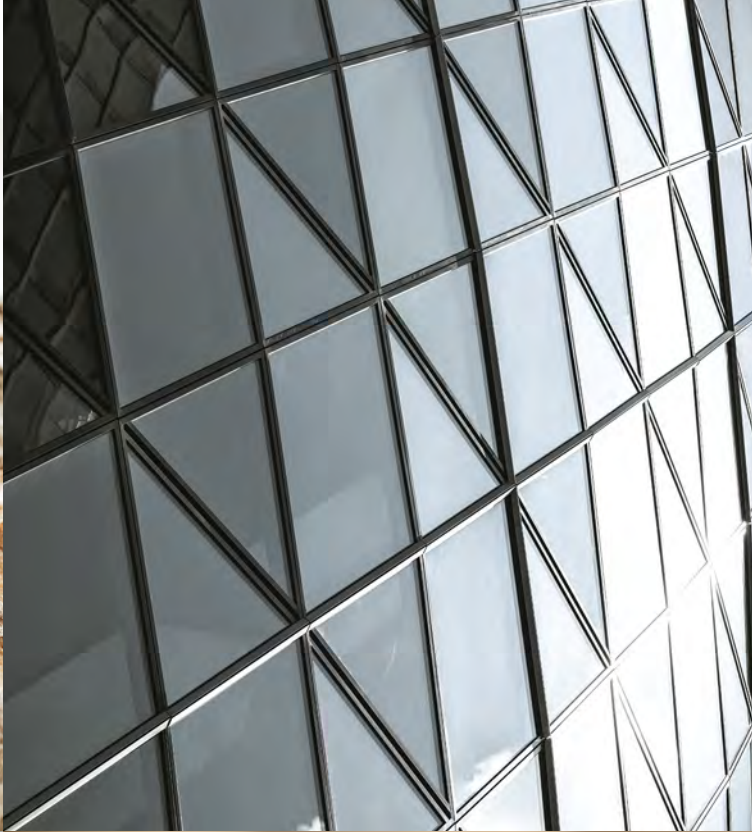
---

Elegantly combining cooking and enjoying food is not a question of the available space. This ensemble of tall, wall, and base cabinets seems like a single piece of furniture and meets the highest demands for all the technical functions of a kitchen. The minimalist outer aesthetics conceal sophisticated ideas, such as handle-free doors and pull-outs that open automatically at just a light touch, or the disappearing tall cabinet door, which can make electrical appliances “invisible” when not in use. So that nothing disturbs the sophisticated atmosphere.

















OPEN FOR ANYTHING

## STILL A KITCHEN OR A LIVING SPACE INSTEAD?

---

The *FloatingSpaces* paneling system offers many elegant variations with fluid transitions between rooms and their functions, going beyond known planning solutions. Panels and shelves can be planned down to the millimeter in nearly any surface design offered in the versatile *SieMatic* collections. Panels can be individually assembled, structured, and coordinated according to interior architectural requirements. Shelves are available in thicknesses of 13 mm and 28 mm, and in seamless lengths up to 260 cm. They can be used tone-on-tone or in contrast with the surface of the panel wall. This example shows veneer wall panels and tall cabinets in “*Graphite Oak*,” as well as base cabinets in “*Lotus White*” superior quality gloss lacquer. Veneer shelves become a harmonious part of the whole, and lacquered shelves pick up white tones to form a captivating contrast.



CREATING FLUID TRANSITIONS  
STILL A WALL,  
OR A CABINET INSTEAD?

---

The wall panels of the *SieMatic FloatingSpaces System* can also be used as kitchen cabinet doors, creating an elegant visual connection: from living and eating area to the fully equipped, highly functional cooking area.









SIEMATIC ROOM DESIGN CONCEPTS

# INTERIOR DESIGN FOR THE KITCHEN AND BEYOND



In order to meet your very personal wishes and requirements perfectly, *SieMatic* develops more than just first-class kitchens: We also create design concepts for timelessly elegant living spaces, which perfectly reflect the personality of their owner. This kitchen in satin matte “*Umbra*” lacquer will appeal to many who love a relaxed, open atmosphere and would like to discreetly integrate the functions of the kitchen into the living space. The walls copy the hue of the furniture, creating a calm look that is in turn enlivened by the freestanding, half-height cabinets.











**DESIGNING WITH LIGHT**

*Interior lighting in the “Brushed Nickel” glass cabinet catches the eye and casts beautiful objects in the right light.*



**EASY ACCESS**

*The SieMatic handle integrated into the frame underscores delicate aesthetics. It is available in all SieMatic lacquer colors and in various metal surfaces.*





**HARMONIC COMPOSITION**

*The tone-on-tone design of satin matte “Umbrá” lacquer and “Piatra Gray” composite stone along with the equal proportions of side panel and countertop: aesthetic purism.*



**PERSONALITY RIGHT DOWN THE LINE**

*Whether lacquer, metal, or wood: The fine design of SieMatic 6.5 mm front panels speaks a language all its own.*

NOT JUST FOR ORDER'S SAKE

## WOODEN INTERIOR ACCESSORIES

---

The material combination of the *SieMatic wood interior accessories*, winner of design awards, looks like it was “cast from a single mold”: light oak, aluminum, and porcelain; elegantly connected by a light shade of grey. If you love natural, warm, and cozy; if you value precise workmanship; and if you appreciate a broad range of individual options, then you will enjoy a feast for the eyes every time you open a drawer. The *SieMatic wood interior accessories* system encompasses many elements that are as practical as they are decorative, including stackable porcelain jars and wooden boxes in various heights that can be labeled and re-labeled in pencil and provide optimal utilization of storage space, as well as the matching *GripDeck*, which keeps pots, pans, and large boxes of supplies from slipping.













FINE TUNING, CAREFUL REPETITION

# THE HARMONY OF CONTRASTS



When a few selected colors are used simultaneously in different shades for furniture, walls, ceiling, and floor, the result is a composition that immerses the entire space in a comfortable, timelessly elegant atmosphere.

The play of matte and glossy surfaces in wood, metal, lacquer, and stone, reduced to shades of black and white, marks the contrast-rich yet harmonious design of this *SieMatic*. Even more surprising: The wall panels with their fine frames in "Matte Black Oak" conceal plenty of useful storage space.



SENSUOUS AND SENSIBLE

ACHIEVING MORE  
WITH LESS.  
THAT IS GOOD DESIGN.

---

Different materials, one color: Brushed metal for the fronts of the pull-outs and the delicate handles integrated in the frames. Granite and marble for the countertop and niche walls. “Black Matte Oak” for the side panels and for the fronts of pull-outs, which can be opened with a slight touch to reveal additional storage space.







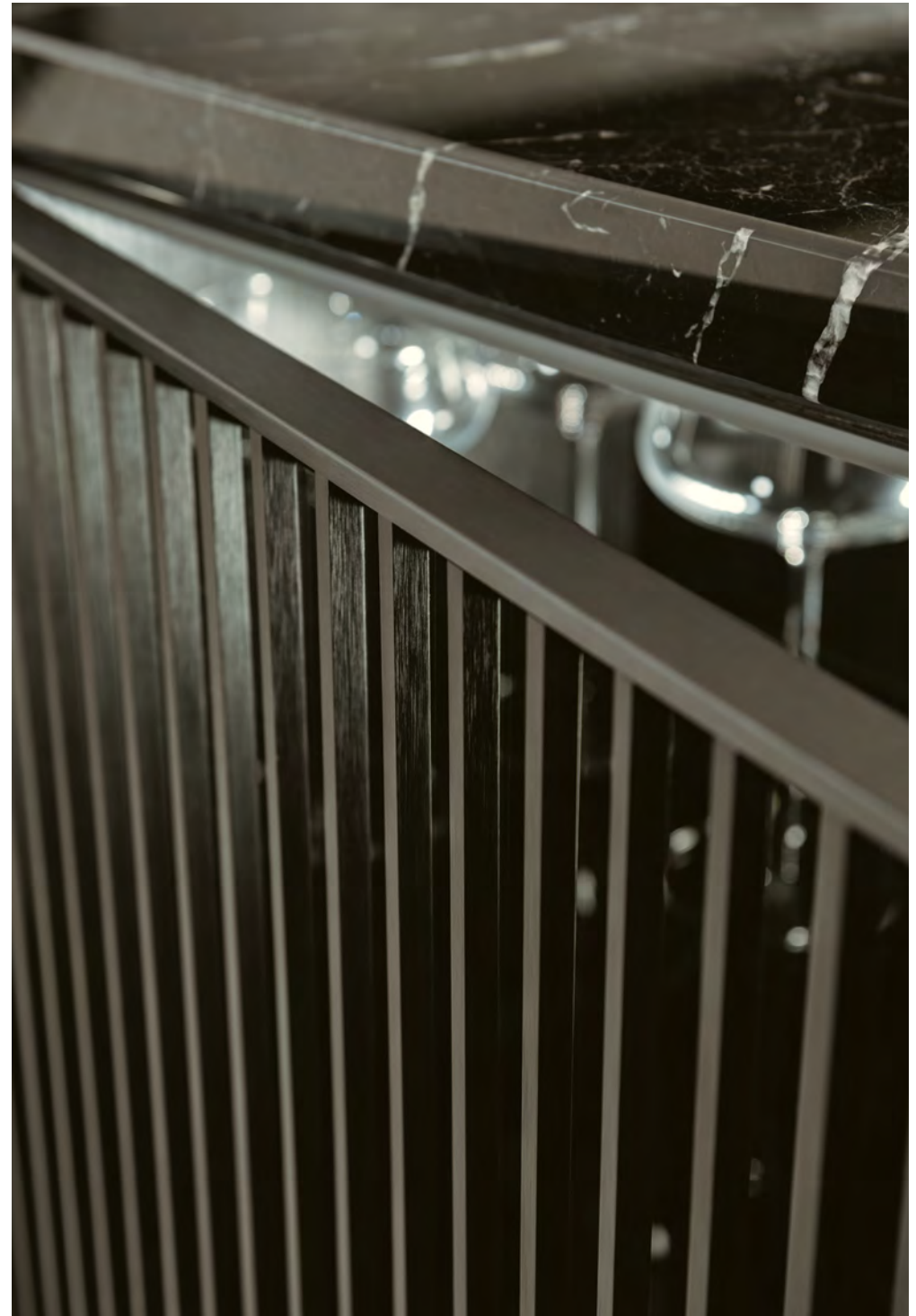


DESIGN WITH A CLEAR VIEW

FOR EVEN  
MORE TRANSPARENCY:  
SIEMATIC  
GLASS CABINET DOORS

---

The glass cabinet doors with vertical louvers in the three *SieMatic* metallic lacquer hues “*Nickel*”, “*Gold Bronze*”, and “*Matte Black*” make for particularly individual design elements. Their unique aesthetics create attractive accents, allow for versatile combinations, and elegantly enliven your kitchen design. They combine storage space with beauty – with or without interior lighting.









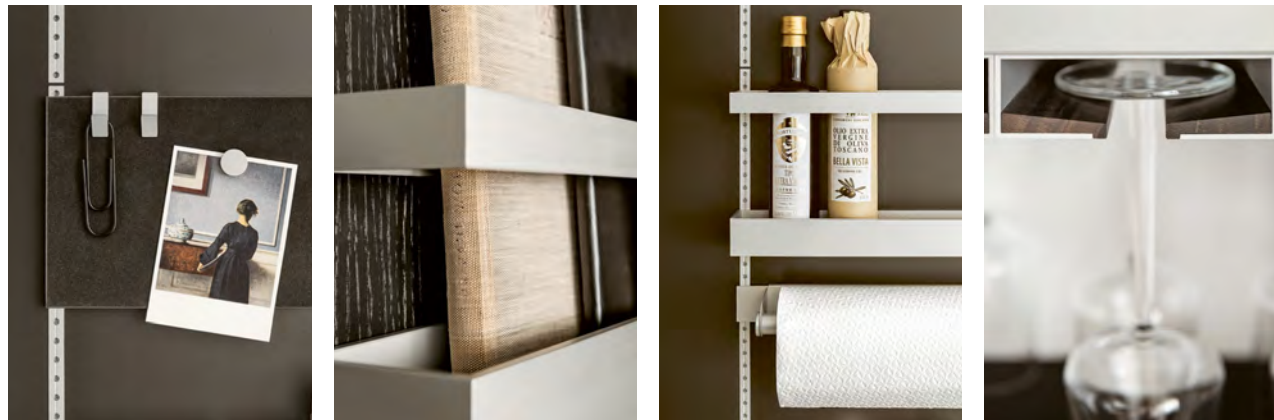






SIEMATIC MULTIMATIC

# ORGANIZING YOUR HOME HAS NEVER BEEN SO MUCH FUN



With *MultiMatic*, the design philosophy of *SieMatic interior accessories* has been applied consistently for drawers and pull-outs in tall, wall, and base cabinets. This highly flexible interior design system exclusive to *SieMatic* offers the same aesthetic pleasure created by an elegant combination of materials, such as high-quality aluminum, precious wood, and fine porcelain – while also offering many new functions perfected down to the last detail, giving you up to 30% more storage space.





**A PLACE FOR EVERYTHING**

*Your lovely little treasures can rest in individually subdividable trays, on dark smoked chestnut or light oak.*



**GREATNESS ON A SMALL SCALE**

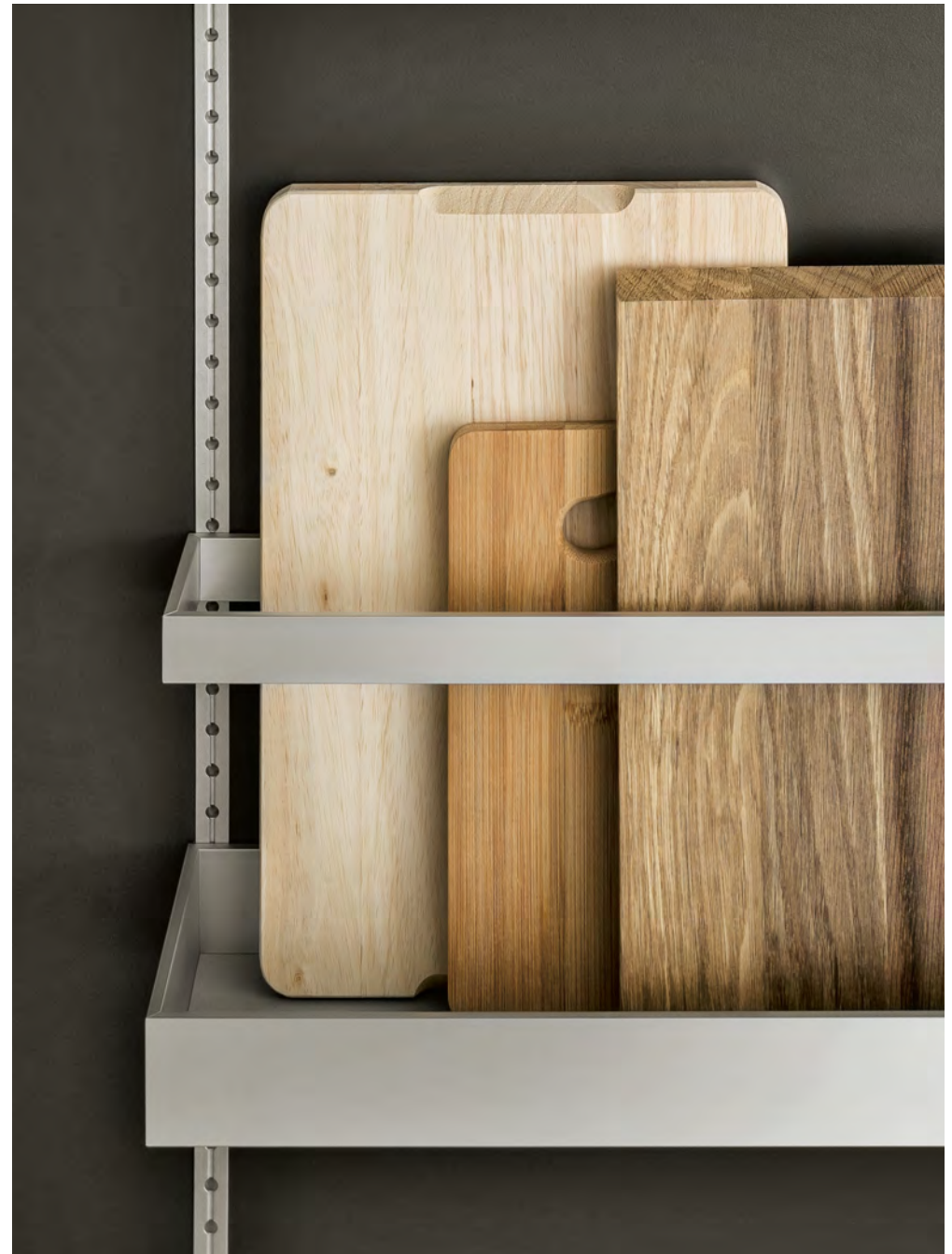
*Precision, elegance and creativity are found in MultiMatic Aluminum interior furnishings, even in the smallest detail.*





**UP TO 30% MORE STORAGE SPACE**

*With the MultiMatic interior design system, you get more out of your kitchen and don't waste an inch of space.*



**THE MULTIFUNCTION TRACK**

*This patented SieMatic development elegantly turns your kitchen cabinets into highly flexible functional elements.*

SIEMATIC QUALITY WORKMANSHIP

# MINIMALIST DESIGN DEMANDS MAXIMUM PRECISION



Consistent abandoning of the superfluous – sounds simple, but it isn't. Concentrating on a few components in design does not allow for any compromises in workmanship. It reveals everything to the eye and touch: love of detail, degree of perfection, and, last but not least, quality of material. Because reducing stimuli sharpens the senses to what's essential. That is why the design principle of the *SieMatic style collection* PURE includes the consistent elimination of everything that could disturb the graphically clean look and sensual perception.













HIGH TECH MEETS NATURE

## THE GREAT ART OF OMISSION

---

This example of a *SieMatic* is marked by design with clean surfaces and lines, without any superficial decorative elements or ornamental add-ons, and without handles, knobs, or handle recesses. All the pull-outs and doors open automatically at a slight touch. This puts the focus on what's really of value: Sophisticated "Smoked Oak" was selected for the tall cabinets and prep island, bringing together the nuances of color in the sensitive room design in its vibrant, vertical grain. The shine of stainless steel surfaces provides an exciting contrast and frames the island with a delicate 1.3 cm thickness. The island unobtrusively integrates state-of-the-art appliances and a downdraft extractor hood.



OUTSTANDING DESIGN BRINGS JOY

# TIMELESS ELEGANCE FOR VALUES YOU CAN LIVE IN FOR A LONG TIME

---

The world is full of products with a superficial attraction that rapidly fades. Good design that lasts for decades is not created until something is well thought-out and well made – and thus provides a timelessly elegant look. Furniture of recognized high design quality includes not just chairs, tables, and lights but also numerous *SieMatic* developments: kitchen programs and design elements that have received internationally recognized design awards and have earned their place in the history of product design.













“PERFECTION IS ACHIEVED,  
NOT WHEN THERE IS NOTHING MORE TO ADD, BUT WHEN  
THERE IS NOTHING LEFT TO TAKE AWAY.”

**ANTOINE DE SAINT-EXUPÉRY**  
*French author, 1900–1944*

LESS IS MORE

# CONCENTRATING ON THE ESSENTIAL REVEALS THE VALUE OF THE MATERIALS

---

A continuous veneer pattern with particularly expressive wood surfaces gives design the character of master craftsmanship. A beautiful example of this is this cozy-elegant design: The light hue of satin matte “*Sterling Gray*” combines with high-gloss dark “*Graphite Gray*” in the cooking area. Tall cabinet elements in exclusive walnut veneer create an optical link to the living room.











A SHELF WITH MANY FUNCTIONS

## ROOM FOR IDEAS IN EVERY NICHE



The *SieMatic* light shelf element is truly multi-talented. Its various light functions – from perfect work light to atmospheric mood lighting – can be configured individually. Furthermore, it offers many versatile planning solutions and can be equipped with numerous functional elements.

REMARKABLY LIVABLE

THE MOST BEAUTIFUL COMBINATION  
OF TRADITIONAL  
CRAFTSMANSHIP AND INDUSTRIAL  
PERFECTION



No material exudes as much natural warmth as wood – even more so when it is used across large spaces. However, achieving a consistently artistic look whilst using multiple sheets of veneer, as shown in this *SieMatic* example, requires the highest precision and craftsmanship: from those who carefully select, combine, and process the best veneer woods to those who put them together to create the perfect kitchen for you at home. Here, tall cabinets are used as room dividers, with expressive veneer grain patterns in fine walnut that create a comfortable yet elegant atmosphere, connecting the cooking area with the living area.













ARCHITECTURE AND DESIGN IN PERFECT HARMONY

# CLEAR GEOMETRY FOR THE KITCHEN

---

Lines compose surfaces. Frames open up new space. Cubic shapes adopt a purpose.

Graphic clarity creates the perfect symbiosis of furniture and architecture.

The design concept of the *SieMatic* PURE collection brings striking contours and a unique character to purist kitchen design. Its characteristic feature is the delicate, 2-cm frame that surrounds integrated elements: a design that creates clear boundaries whilst simultaneously opening up new spaces for additional configuration and design options, from cabinet ensembles to wall racks. Developed in collaboration with Berlin-based design studio KINZO. The *SieMatic* PURE Collection makes it possible to design sculptural, functional cabinetry of timeless elegance that acts as an architectural and aesthetic bridge between kitchen and living space.

CONTOUR AND STRUCTURE

# PURIST DESIGN BECOMES SCULPTURAL



In this split-level apartment, two dark monolithic walls build tension. Like the matting of a picture frame, they provide a backdrop to cabinets with a distinctly contoured *Frame Design*. This creates an impression of freestanding furniture that structures the space: The front-facing cabinets act as a room divider, the tall cabinet ensemble on the gallery-like side wall as a connector. The cantilevered black steel staircase, folded like an accordion, echoes the language of form of the vertical wood slats in front of the glass facade. The dark lines of shadows on the ceiling and floor reference the thick window frames. The tracks of spotlights integrated in the ceiling also flow from the space's graphical design. The result is an accentuated interplay of light and shadow, bright and dark, and black and white.













THE SIEMATIC FRAME DESIGN

## THE ART OF OMISSION, ELEGANTLY FRAMED

The *SieMatic* PURE Collection is distinguished by a dialog of lines and surfaces that is consistently visible, even in shelves and sideboards. For example, countertops, side panels, and baseboards create delicate frames that surround handle-free pull-outs and give the impression of furniture floating freely in space. A combination of wall and base cabinets discreetly integrates a sink, dishwasher, stovetop, and exhaust hood. The high-quality “*Lotus White*” surfaces in finely pearled *SieMatic textured lacquer* have a unique look and feel.

The gently marbled yet vibrant quartz composite surfaces from the *SieMatic StoneDesign* range chosen for the niche with indirect lighting match the white lacquer perfectly, underscoring a comfortable elegance. The material and color combinations selected here show just one way to use the new *SieMatic Collection* to create minimalist and highly individual spaces.











PRECISION RIGHT DOWN THE LINE

# MINIMALIST DESIGN IN MAXIMUM QUALITY

---

The living heart of this spacious city apartment flooded with light is the kitchen. With bar seating, the island becomes a meeting point; the peninsula “buffet” connects the kitchen and living area. The graphically streamlined, linear design principle of *SieMatic Frame Design* corresponds to the shape of the windows, which are also complemented by the lines in the ceiling for integrated lighting. Elliptical and round light fixtures provide a sensitive counterpoint to the stripped-down design and accentuate the minimalist character of the kitchen cabinetry. The use of the same porcelain stone material for the floor and wall lends the room serenity, while simultaneously emphasizing color contrasts.









NEW DESIGN WITH NEW FUNCTION

## PERFECT DESIGN: THE PRINCIPLE OF THE SOLITAIRE

The visual focus of the room is the clearly contoured, contrast-rich cooking area on the back wall. Here, *SieMatic Frame Design* opens up design options for a unique, flush-mounted combination of shelf and wall cabinets inside the niche, creating a signature piece for the kitchen. Delicate, black aluminum frames surround doors of nearly opaque glass tinted black. The surfaces of the base cabinets in *SieMatic* textured lacquer “*Stone Gray*,” high-quality wood-grain laminate “*Onyx Oak*” and the asymmetrically positioned counter showcase the characteristic, precise 2-cm lines to their best advantage. The tall cabinets with their integrated appliances have a sculptural but not dominant effect because their potential bulk is recessed halfway into the wall.







PURE ARCHITECTURE

# FROM INTERIOR DESIGN TO INTEGRATED DESIGN



A strong slant of high windows along the entire length of an attic-style space: architecture that truly demands high-quality, custom-tailored spatial planning. Here interior and product design enter into a unique symbiosis, integrating the furniture into the architecture and giving it an ambience of transparent weightlessness. Wall cabinets and shelf units are recessed in the gable wall, which is covered to the ceiling edge with naturally elegant stone decor. The open niche compartment in the island echoes the wall paneling. The tall cabinets with large but understated integrated cooling and baking appliances are part of a functional block that acts as both a room divider and the center of the space.

*SieMatic Frame Design* continues into the living area with a narrow, suspended shelf unit.













SOPHISTICATED INTEGRATION

## THREE-DIMENSIONAL AESTHETICS

---

Wall cabinets and shelves are installed flush into a niche in the gable wall. Wall cabinets, shelves and base cabinets all have different depths, relaxing any graphic severity and giving the room particularly comfortable dimensions. The contour of *SieMatic Frame Design* is sustained with an integrated, L-shaped band of LED lights in the niche, casting an atmospheric light on what's presented below.



TAILOR MADE INTERIOR DESIGN

## TIMELESS ELEGANCE AS THE MEASURE OF ALL THINGS

---

The interplay of wall paneling and furniture surfaces gives the entire room a timelessly elegant character. Corresponding in color to the stone panels of the gable wall, the central block that connects the kitchen with the living area is covered in wall paneling with a silky appearance. For the cabinetry, a *SieMatic* wood-grain laminate in “*Onyx Oak*” was chosen: This high-quality material with its deceptively natural look radiates warmth while also offering the ideal conditions for use in a kitchen.









A HIGH-QUALITY ALTERNATIVE

# THE “JAVA OAK” INTERIOR DESIGN

---

Attractive in both looks and price, the interior design in “Java Oak” is family-friendly, straightforward alternative – easy-care and durable with a premium character. This is achieved through the combination of real-wood elements on a natural-looking base of high-quality laminate.

The elegant imitation wood places utmost importance on creating a harmonious surface with pores and grain structures.

Like with every *SieMatic* interior design system, “Java Oak” permits the highly flexible, customized arrangement of drawers and pullouts. From inserts in a wide range of formats and combinations to the practical *GripDeck*, which provides a secure hold for pots and pans inside.





① 0 1 2 3 4 5 6 7 8 9 🔒









TIMELESSNESS FOR THE FUTURE

# QUALITY IS THE BEST FORM OF SUSTAINABILITY

---

We have always felt a deep sense of responsibility towards our environment and future generations. This is why strict environmental regulations have always been a matter of course in the development of our products, the selection of our materials, our transport routes and the production of our kitchen furniture.

They often go far beyond the standard for the industry. We regularly have them checked and certified by neutral and reputable bodies, from the stringent FSC™ certification to the high standards of the US CARB II standard (*TSCA Title VI*). But we also make an equally important contribution to sustainability with our high quality standard. Every SieMatic kitchen that leaves our factory is built for decades of use.

This starts with even the tiniest screw and hinge, which have to pass the toughest load tests in our own testing laboratory. And it culminates in the timeless design of our kitchens, which transcends generations and thus sustainably conserves resources.

For more information on sustainability and certification, please visit  
[www.siematic.com/sustainability](http://www.siematic.com/sustainability)



THE SIEMATIC COLORSYSTEM

# THE ART OF SETTING THE RIGHT TONE

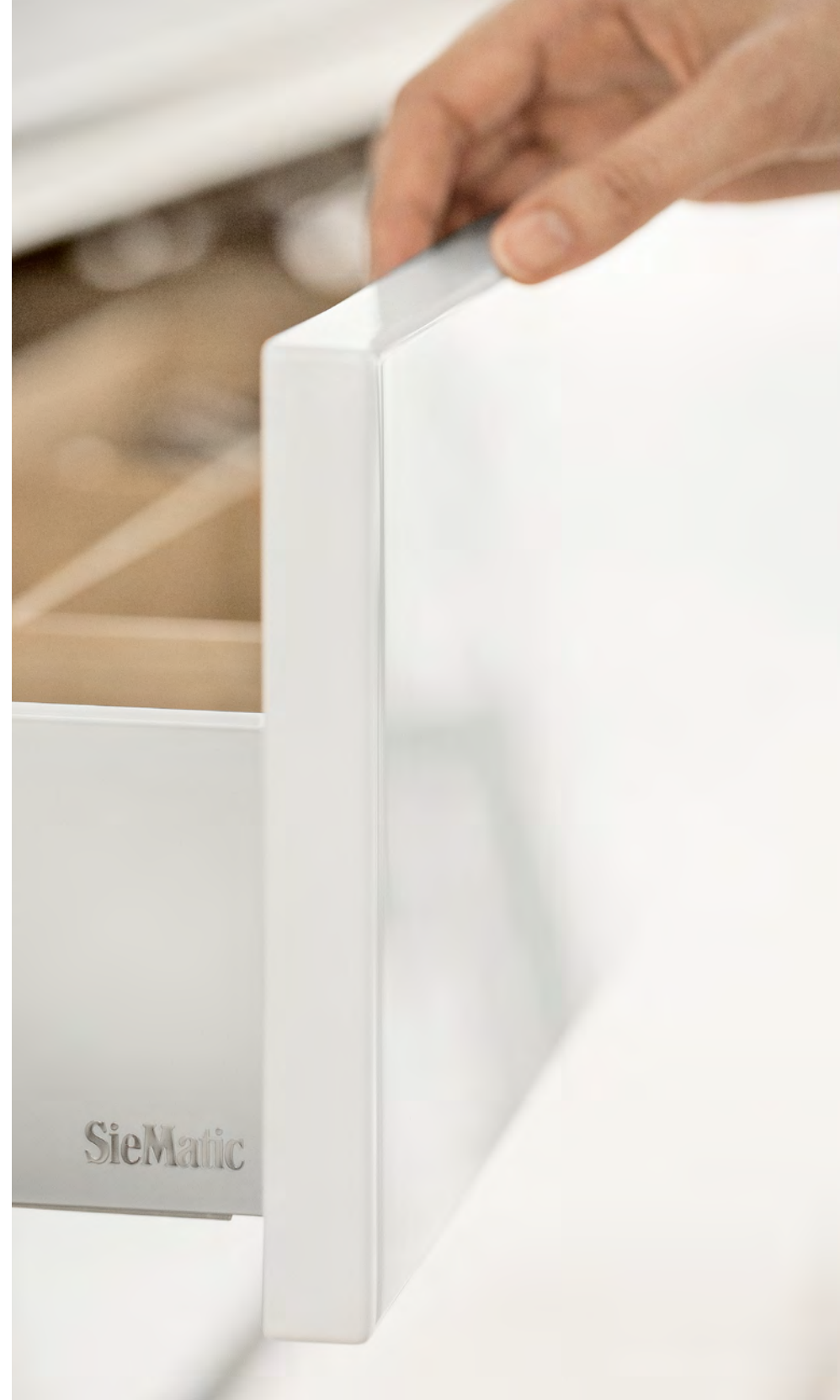
---

Color is one of the most important design elements in interior design, because it spontaneously creates moods and feelings. The choice of colors determines whether a room is perceived as inviting, elegant, open, cool, or cozy. Achieving a nuanced combination of the different materials and door panels used in a kitchen and creating the desired harmony require not only a highly sensitive use of colors but also a well conceived concept. That is why the *SieMatic ColorSystem* was developed. Available in a range of attractive matte and glossy colors, which make it possible to combine the *SieMatic* furniture elements across all collections. Furthermore, in the area of SQ lacquer, the 1,950 individually selectable satin matte and glossy hues of the *SieMatic Individual ColorSystem* are also available.

**FOR INFORMATION AND INSPIRATION**

Immerse yourself in the possibilities provided by *SieMatic Kitchen Interior Design* to plan, furnish, and design your own individual kitchen.

*With your SieMatic specialist or at [www.siematic.com/color](http://www.siematic.com/color)*





GLEAMING QUALITIES, INCLUDING MATTE  
**SQ LACQUER SURFACES**

Nowhere is furniture subject to more stress than in the kitchen. It is for this reason that, particularly there, materials of select quality and perfect workmanship should be used. With the *SieMatic PURE* lacquer programs, home furnishings radiate elegance without offering any point of vulnerability to the high stresses of the kitchen. This is because the exclusive *SieMatic SQ lacquer front panels* are manufactured in “Superior Quality,” in an innovative lacquer finishing process that provides for the greatest flexibility in planning and guarantees environmentally friendly, first-class quality “made in Germany.” The *SieMatic AntiPrint* coating prevents fingerprints, even on silky matte lacquered surfaces.

THE MOST ELEGANT WAY TO SPEND LESS  
**SIMILAQUE SURFACES**

An alternative in look and price to the exclusive *SieMatic SQ lacquered front panels* is provided by the *SieMatic SimiLaque front panels* in “*high-gloss*” or “*silky matte*,” which also have an elegant, high-quality look. Here, too, the *SieMatic AntiPrint* coating prevents fingerprints, even on silky matte lacquered surfaces.

GOOD STYLE YOU CAN FEEL  
**TEXTURED LACQUER SURFACES**

*SieMatic textured lacquer* is distinguished by a uniform, fine pearl texture on the matte surface, which is as subtle to the eye as it is to the touch. The material and color options can be seamlessly combined – for sensitive tone-on-tone design or to create richly contrasting accents.

A MATERIAL WITH MANY GOOD SIDES  
**LAMINATE SURFACES**

*SieMatic* furniture front panels in direct plastic coating or HPL are also available in *matte* and *glossy*; they are highly durable, extremely easy to care for and hygienic. They have a flawless, high-quality look and an astonishingly natural effect in designs such as “*Java Oak*,” “*Onyx Oak*” and “*Larix Terra*”.

FROM NATURE TO THE KITCHEN  
**WOOD SURFACES**

As a surface material, wood still continues to enjoy great popularity, because it exudes natural warmth like no other material. Front panel or veneer, “*matte*” or “*glossy*”: *SieMatic Kitchen Interior Design* offers a great variety of woods. Particularly expressive varieties with a continuous veneer pattern give surface design the character of master craftsmanship.

COUNTERTOPS AND NICHERS AS DESIGN ELEMENTS

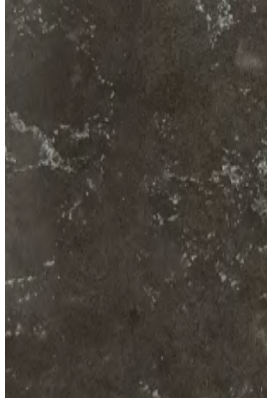
# EVERY MATERIAL HAS ITS PARTICULAR QUALITIES

---

In kitchen design, the appearance and nature of the countertops play an essential role. Whether homey or practical, impressive or functional – the selection of the countertop and niche material can serve the contrasting design of a classic kitchen, emphasize the cooking area, or achieve a harmonious color scheme in the overall design. The range of high-quality countertop designs is extraordinarily high at *SieMatic* – from the material, to the thickness, to the design of the edge, you have the freedom of choice. Whichever you chose: Even the most extravagant material is refined to such a degree at *SieMatic* that it is suitable for the most intense demands in the kitchen.







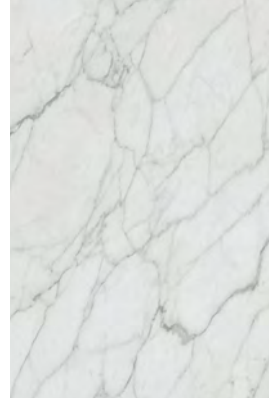
**EXCLUSIVE  
NATURAL STONE**

*Whether marble, granite, limestone or volcanic stone, the particular charm of natural stone countertops lies in the irregularity of their surface, which distinguishes them distinctly from industrially manufactured materials.*



**IMPRESSIVE  
COMPOSITE STONE**

*Composite stones consist of more than 90% natural quartz, to which resins and colorings are added. Although comparable in hardness and density to natural stone, they always have uniform surface colors and structures.*



**DURABLE  
CERAMIC**

*Ceramic is a homogeneous, hard material, in a single color or with a natural, marble-like look. The fired surface is impervious to water, can be recycled, and is absolutely food-safe, so that no impregnation is required. In addition, it is incredibly scratchproof, acid-resistant, and easy to care for.*



**PROFESSIONAL  
STAINLESS STEEL**

*Stainless steel is a tough, hygienic material, whose professional appeal is not impaired by the traces of use; it gets even more beautiful as time goes by. Whether as a complete countertop or as a design accent.*



**VERSATILE  
LAMINATE**

*SieMatic laminate countertops have a very resistant, hygienic surface of layered material and are available in a wide selection of decors and edge designs, which permits harmonious color choices that are perfectly attuned to the front panels and surrounding elements.*



SIEMATIC STONEDSIGN

# EXCLUSIVE COUNTERTOPS AND NICHE PANELS

---

Countertops and niche panels of real natural or composite stone are timelessly beautiful, incomparably elegant, and enhance the character of a kitchen. However, countertops of massive stone are usually offered by their manufacturers only in a few designs. In contrast, *SieMatic StoneDesign* offers numerous variants to expand planning latitude. This is because these countertops are made of a lightweight base material with a 1 cm thick layer of granite, marble, limestone, volcanic rock or composite stone. This way, countertops are manufactured in thicknesses, lengths and surfaces without joints that would otherwise literally be virtually intolerable – allowing numerous design alternatives. *SieMatic* countertops in thicknesses from 6.5 to 140 mm are not only available in many different types of stone, but also with different edge designs: in elliptical form, mitred, with a metal edge and in popular 1 cm optic or with the particularly fine 6.5 mm edge.

And, of course, SieMatic Kitchen Interior Design offers you a wide selection of variants in stainless steel, ceramic and high-quality laminate, which can also be combined well with *SieMatic StoneDesign*.



THE EDGE DESIGNS FOR SIEMATIC STONEDSIGN

MANY THICKNESSES, MANY OPTIONS



**6.5-MM LOOK**

*With a visible thickness of just 6.5 mm, the SieMatic StoneDesign countertops bring an air of captivating weightlessness. Its delicate lines underscore the elegance of purist design.*



**1-CM LOOK**

*Its delicate charm is created by the mere 1 cm thickness of the stone surface, combined with an invisible support structure, which ensures great stability and makes it possible to utilize every kind of stovetop and sink.*



**MITERED EDGE**

*The mitered and bonded sheets and edges give the appearance of a massive countertop 3 to 14 cm thick, to showcase the full beauty of the high-quality stone.*



**ELLIPTICAL EDGE**

*The polished surface of the edge is created in a complex, high-precision, surface finishing process. Its decorative character further underscores the elegance of the countertop.*



**METAL EDGE**

*Edge designs in brushed "Matte Black" or "Gold Bronze" are particularly rich accents that can be elegantly combined with other metallic elements.*

**FOR INFORMATION AND INSPIRATION**

We would be delighted to assist you with your kitchen  
planning and decisions online.



Visit us at [www.siematic.com/advice](http://www.siematic.com/advice)





Rillettes  
d'Oie

*siematic.com*